

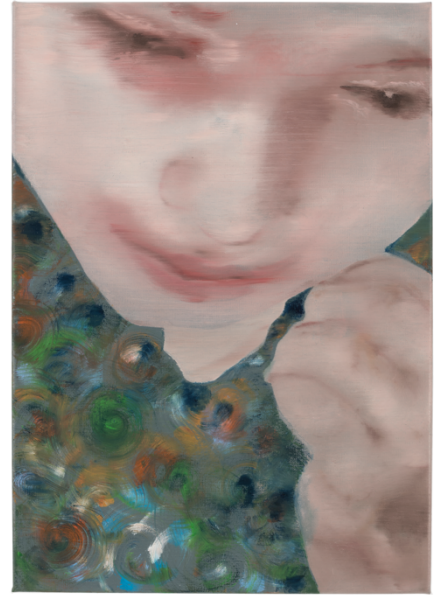
WORKPLACE

Anima Mundi Katinka Lampe

10 March - 29 April

Opening Reception
Thursday 10 March, 6 - 8pm

Workplace
40 Margaret Street,
W1G 0JH London



Katinka Lampe, 253520, 2022.

Workplace is delighted to present its first solo exhibition of Dutch painter Katinka Lampe, opening at the gallery's central London location with a private view on Thursday 10th of March, from 6-8pm.

For *Anima Mundi*, Lampe presents a new series of paintings in which her subjects are tightly cropped or placed in arresting poses, often revealing just a detailed part of their body. This unorthodox perspective and framing acts as a device that shifts our focus away from the identity of the subject towards formal aspects of painting. By inviting the viewer to see beyond what is represented, Lampe's uncanny depictions of people become vehicles to explore the masks we wear to fit in, and the challenges of looking past the surface both in paintings and in human relationships. *Anima Mundi*, as the title suggests, is Lampe's attempt to represent what transcends physical appearances.

Inspired by the chiaroscuro and candle lit depictions of Baroque artists such as Georges de La Tour and Jan ter Borch, Lampe uses light and shadow to create stylised and staged depictions of her subjects. The artificiality of each scene is increased by the introduction of clothing and accessories chosen by the artist herself, moving further away from the portrait as representation, towards the artist's own visual impression of the model. Rings, necklaces and patterned garments adorn the portraits in the exhibition. These items, often repositories of personal histories and one's own individuality, when mediated by the artist become catalysts to explore issues around the process of identity formation.

In her practice, Lampe uses a wide array of painting methods, from classical underpainting to layered stencils which, cut from her drawings, are used to confer an uncanny flatness to her subjects. Lampe finishes her paintings with large brushstrokes that remove her hand from the work and allow the viewer a greater freedom in the interpretation of her subjects. Through this process Lampe creates portraits that appear suspended in time, as they at once traverse the realms of figuration and abstraction to question the fragility of human emotions and connections.

Katinka Lampe (b.1963 in Tilburg, NL) lives and works in Rotterdam, NL. She received her degree from the Academy of Art and Design in Hertogenbosch. She has exhibited extensively across Europe, North America, and Asia with recent solo exhibitions including *Bubble* at Elizabeth Houston Gallery, NY; *Anonymity*, Leeahn Gallery, Daegu; and *Slow*, Ron Mandos gallery, Amsterdam. Recent group exhibitions include *All Eyes*, AkzoNobel Art Foundation, Amsterdam; *Out of Office*, Singer Museum, Laren; and *Colours of Diversity*, Hungarian National Museum, Budapest. Her work is included in the collections of Museum 21C; Museum Arnhem, Arnhem; ING Collection, Amsterdam; APMA, Amore Pacific Museum of Art Seoul; Salon Dahlmann, Berlin; Museum van Loon, Amsterdam; C.N.A.P Centre National des Arts Plastique, Paris; Art Curial, Paris; Frisseras Museum Athens; AkzoNobel Art Foundation, Amsterdam, Igal Ahouvi Art Collection, Tel Aviv/ London, among others.

Workplace is a contemporary art gallery, based in London, UK.

Workplace was founded in Gateshead in 2005 by Miles Thurlow and Paul Moss, with a second space in London between 2013-18. In 2020, Workplace relocated to London permanently, opening a gallery in the city's West End, followed by a second space in London's East End in 2021.

Before moving to the capital, the gallery set up a charitable foundation in Newcastle to leave a legacy in the North East of England. Committed to ideas of diversity and community, the ethos of the Foundation runs through the gallery, with a continued wish to represent the work of artists whose practices reflect the multiplicity of voices that constitute our society today. Workplace continues to promote, engage and champion artists working across media and at different career stages, through a program of exhibitions, events and art fair participation.

For all press inquiries please contact: press@workplace.art

For all sales inquiries please contact: sales@workplace.art